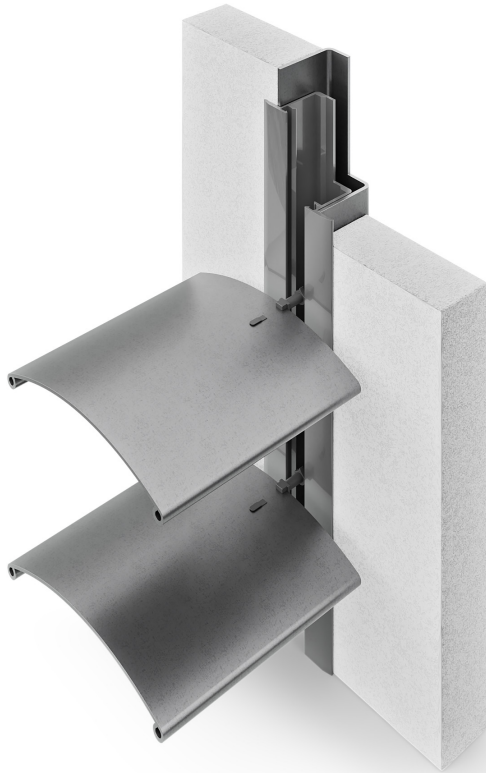


Flush-mounted guiding rail for the BASIC system



✓ dedicated system: BASIC lintel blinds

✓ available types of slats: C-80, Z-90

✓ material of manufacture: aluminium

Aluminium flush-mounted guides for the BASIC lintel blind system allow you to fully use the blinds' capabilities while minimising the visibility of the window cover structure. Guiding rails are placed under a layer of plaster, thanks to which they remain hidden and do not disturb the harmonious appearance of the building.

The flush-mounted guiding rail system can be used with C-80 and Z-90 slats.

WINDOW COVERS