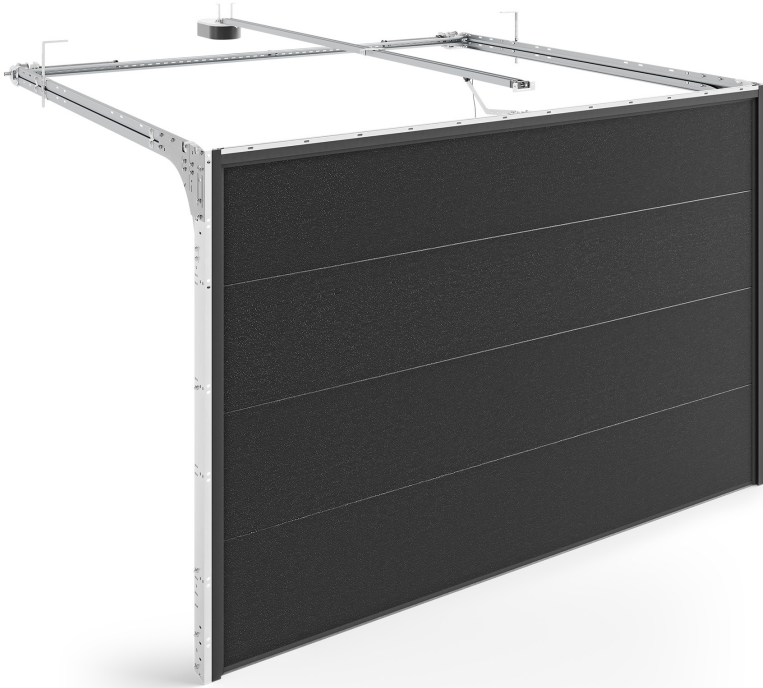


# INFINITI Thermo R – doors with torsion springs (back)



- ✓ panel thickness: 60 mm
- ✓ maximum door weight: 165 kg
- ✓ minimum rebate width: 100 mm
- ✓ minimum lintel height: 150 mm
- ✓ panels painted in RAL colours or veneered
- ✓ smooth or high embossed panels
- ✓ rear torsion springs

**0.81**

Heat transfer  
coefficient U [W/m²K]\*

**0.89**

Heat transfer  
coefficient U [W/m²K]\*\*

**5.5 m**

maximum width

**3 m**

maximum height

**12.5 m²**

maximum size

The INFINITI Thermo R sectional garage door is primarily but not exclusively designed for use in residential buildings. It proves effective wherever thermal insulation is crucial. **The INFINITI R system means that the door's torsion mechanism takes up less space in the lintel, making installation easier.**

The distinguishing feature of INFINITI Thermo sectional doors is the panels made of galvanised steel filled with thermal insulation material. They are 60 mm thick, which is half more than the previous standard for well-protected garages – 40 mm. The panels have double seals on the bottom interlock and a double-lip seal with a thermal chamber around the perimeter. Additionally, **the panel has a uniform thickness throughout its height, ensuring effective thermal insulation free from thermal bridges.** As a result, less heat dissipates through the

garage door.

Advanced and dependable security systems ensure that operating the door is completely safe. With a wide range of aesthetic options available, it can be customised to complement any architectural style and cater to the preferences of all investors. **INFINITI Thermo R doors can also be equipped with numerous additional accessories**, which, for the convenience of buyers, have been combined into personalised packages: Quiet, Safe, and Premium.

\*Heat transfer coefficient  $U$  [ $W/m^2K$ ] given for INFINITI Thermo sectional doors with dimensions of 5000 x 2500 mm. For gates without glazing, service doors, ventilation grilles.

\*\*Heat transfer coefficient  $U$  [ $W/m^2K$ ] given for INFINITI Thermo sectional doors with dimensions of 2500 x 2250 mm. For gates without glazing, service doors, ventilation grilles.